

Atchafalaya Basinkeeper
Dean A. Wilson
Cell: (225) 692-4114



Outreach Coordinator
Monica Fisher
Cell: (225) 685-9439

November 4, 2020

**THESE PROJECTS ARE CO-SPONSORED BY ATCHAFALAYA BASINKEEPER, LOUISIANA
CRAWFISH PRODUCERS ASSOCIATION-WEST, HEALTHY GULF & DELTA CHAPTER
SIERRA CLUB**

We want to thank Coastal Protection and Restoration for their request to submit more proposals to restore the East Grand Lake Management Unit.

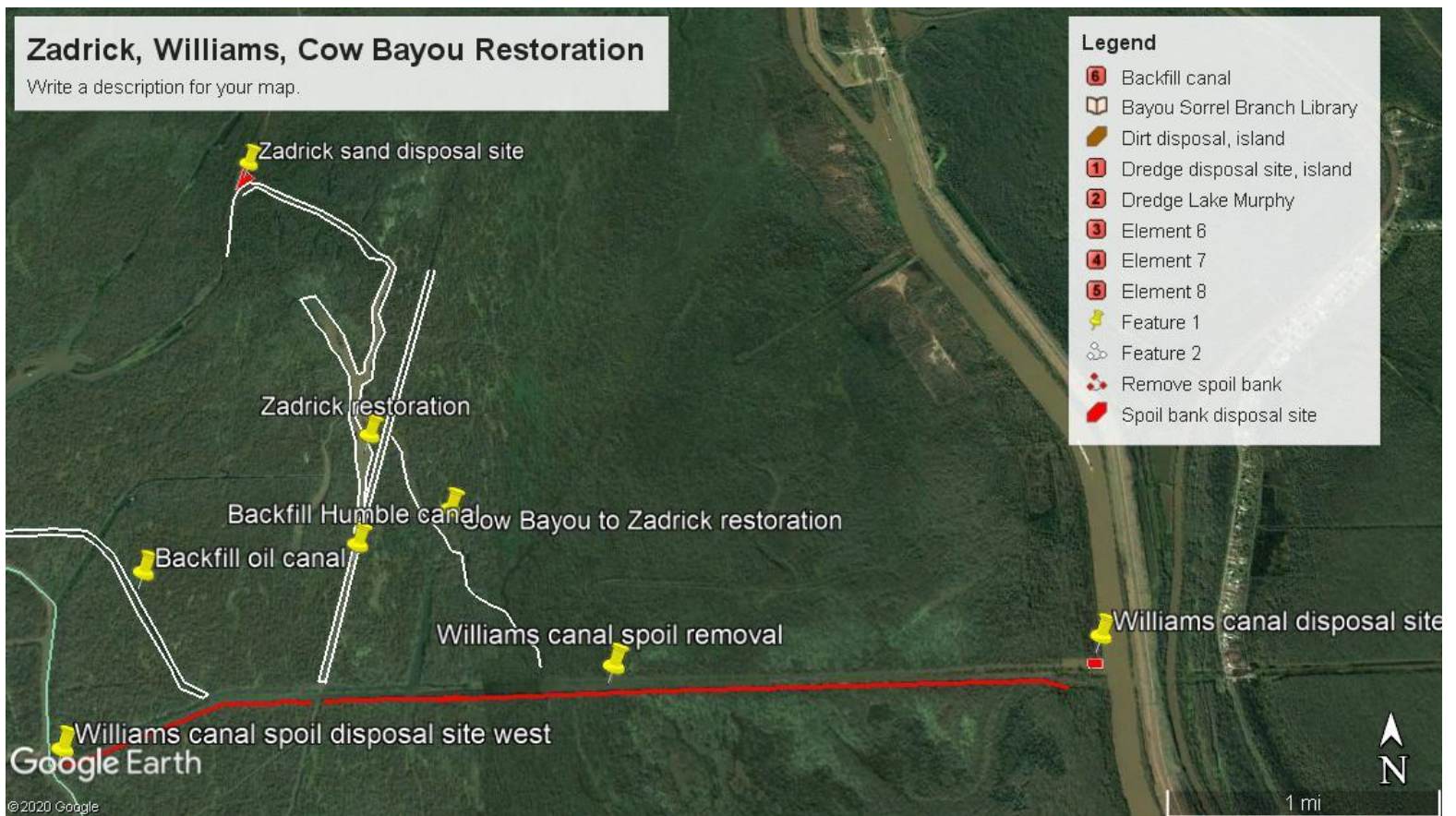
Removal of the Williams canal spoil bank is essential for Phase 2 to work. Most of those waterbottoms are claimed by Williams Inc., A. Wilbert's Sons and Jeanerette Lumber that we believe may oppose the project.

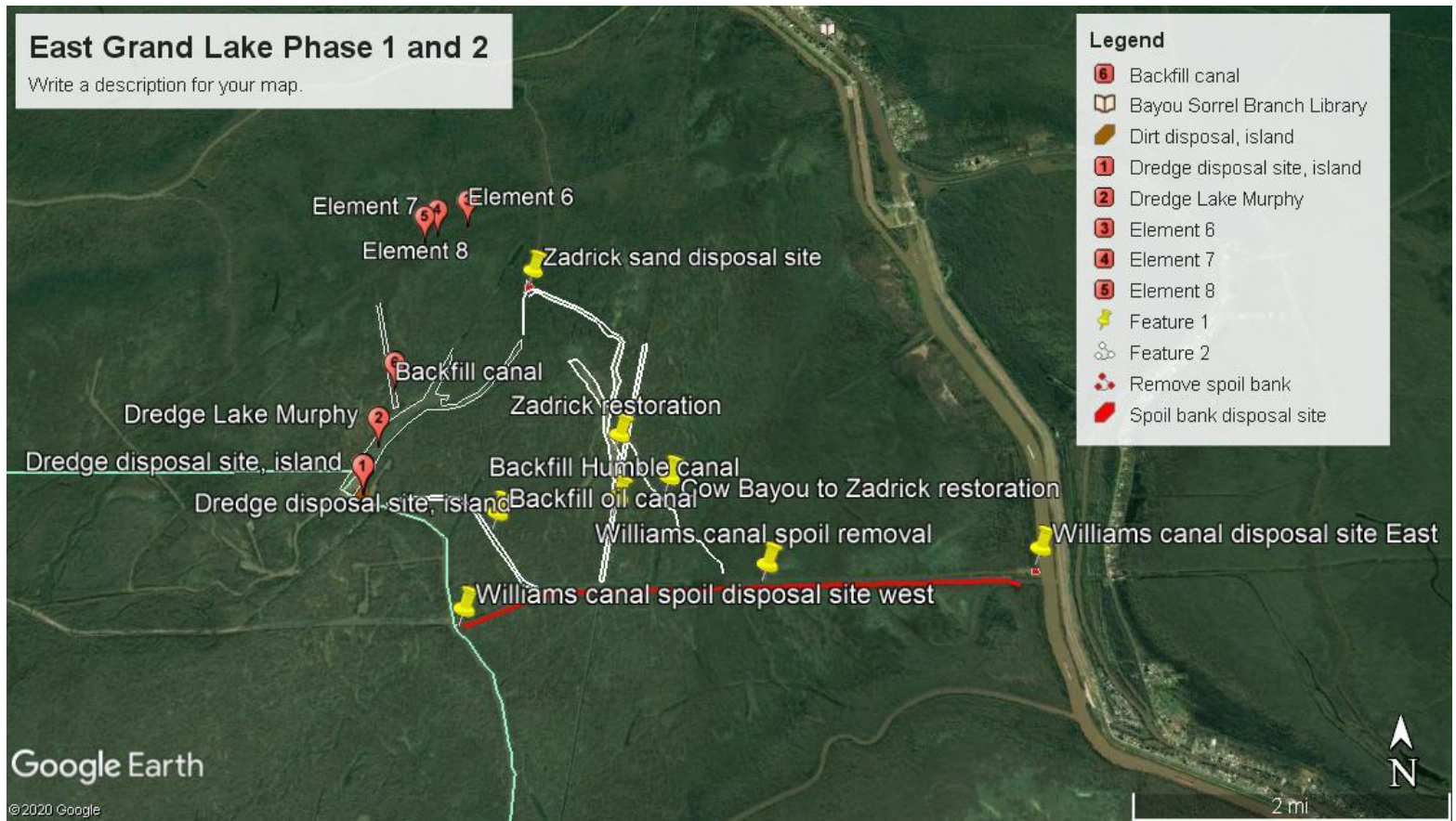
**EAST GRAND LAKE PHASE 2
ZADRICK, COW BAYOU,
HUMBLE CANAL, WILLIAMS**

Restoration is a tricky business and if done wrong it can do more harm than good. It is important that this phase is done in stages to maximize benefits and minimize damage.

- Stage 1: Remove Williams canal spoil bank from the GIWW to Cross Bayou. Two disposal sites are suggested:
 1. One on south corner where Cross Bayou and the Williams Canal meet on the east bank of Cross Bayou, that piece land is part owned by the state of Louisiana and others.
 2. Second one on the Bayou Bridge Pipeline right-of-way, land owned by the state. The BBP right-of-way needs to be blocked because of the amount of water in canalizing to the southern end of the EGL Unit, creating a hydraulic dam and huge water quality problems without mentioning bringing significant amount of silt. Since BBP directionally drilled under the GIWW and the pipeline comes up closer to the surface far away from the bank, it should be plenty of room to dispose dirt from the spoil bank.We cannot stress enough that removal of the spoil bank along the Williams Canal is essential for Phase 2 to be effective in its efforts to restore the East Grand Lake project area. Most of the waterbottoms where the spoil bank is located are claimed by Williams Inc., A. Wilbert's Sons and Jeanerette Lumber that we believe may oppose the removal of the spoil bank.
- Stage 2: Backfill Humble Canal to increase current through wetlands and Cow Bayou. Waterbottom claimed by Williams Inc., Jeanerette Lumber.

- Stage 3: Immediately after backfilling the Humble Canal and using a small dredger, suction dredge Cow Bayou to Lake Zadrick spreading the slush far and wide. This should be done during high water so the increased current created by backfilling the Humble can spread the very fine slush far and wide.
- Stage 4: Restore Zadrick Lake. Sand should be placed as an island on the north bank where Cannon Bayou connects with Lake Zadrick. Land for disposal site is owned by Norman, Mildred and others. A high island on their land may be a welcome development for them since that area is not a functioning wetland and higher land will be a good refuge for wildlife during floods. Iberville Parish School Board owns much of the east bank of Lake Zadrick and permission can be obtained by the School Board we may be able to identify a second disposal site along that part of the Humble Canal.
- Stage 5: If funding is available after finishing stages 1 to 4, backfill canal that splits to the northwest from the Williams Canal all the way to Bee Bayou. Waterbottom claimed by Williams Inc. We believe Rudy Sparks will try to stop this essential part of the project.





As it can be seen on the complete project map, the proposal restores deep water habitat, completely restore north to south flow more evenly throughout wetlands with minimum introduction of river water. The only introduction of river water are elements 6, 7 and 8, located at a place with lower sand loads. This project should increase the Basin's flood capacity by restoring lakes to historical depths and improving water flows.

We are looking forward to being of assistance to make this unprecedented and amazing project a reality. The project will be supported by all stakeholders, except some waterbottom claimants, creating excitement among all the fishermen and other users of the Basin and much needed support for Atchafalaya Program projects.